



## **Raymond® Adjustable Baseleg Walkie Straddle Models RAS20/25**



**To optimize load handling,** the RAS handle contains proportional lift lower for smooth, fine positioning of loads.

**Raymond® Adjustable Walkie Straddle Models RAS20/25.** Versatility, affordability, and convenience wrapped into one. When you need to maneuver multiple-sized pallets quickly and easily in tight quarters, turn to the *Raymond* RAS Stackers.

These maneuverable staging and dock-to-stock trucks with adjustable baselegs are a versatile, cost-effective solution to pallet handling. Intuitive designs make operator training a breeze. Easy-to-operate ergonomic controls and a transistorized control system provide smooth and precise load handling. Programmable acceleration rates further enhance control of loads in tight, congested work areas—helping to ensure efficient operation.

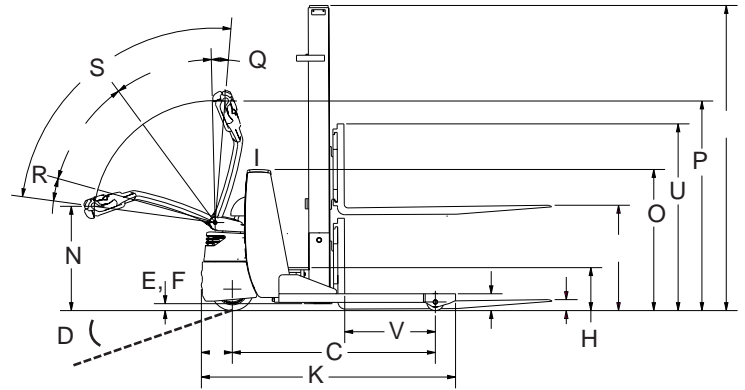
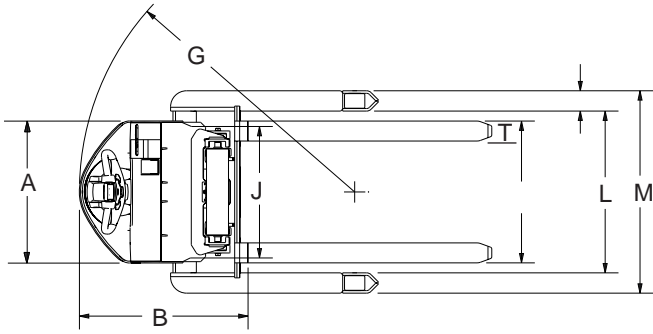
### **RAS20/25 Standard Equipment**

- 2000 and 2500 pound maximum capacity
- High impact polymer cover
- Adjustable straddle baselegs with openings from 35" to 51"
- Performance programability
- Handle position speed transition
- Electronic key with password protection
- Hour meter and battery discharge indicator

**RAYMOND**  
Above. And beyond.®

[www.raymondcorp.com](http://www.raymondcorp.com)

# Specifications—RAS20/25



MAST SPECIFICATIONS			
Overall Collapsed Height (in)	Elevated Height (in)	Nominal Free Lift/ Full Free Lift * (in)	Capacity (lbs)
Height	2-stage	2-stage	
71.2	104	6/30	2000/2500
83.2	128	6/42	2000/2000
91	143	6/50	1600/1600
76	112	6/34	2000/250

\* W/LBR= 40"

PERFORMANCE SPECIFICATIONS		RAS20/25	
Truck Weight, less battery with 130" mast	lbs.	1560	
Battery Connector		SB-175 red	
Battery Lead Position/Length	in.	B/18	
Battery Voltage	V	24	
Minimum Battery Weight	lbs.	290	
Travel Speed	empty/loaded	mph	3.6/3.4
Lift Speed	empty/loaded	fpm	41/25-22
Lowering Speed	empty/loaded	fpm	44/47-48

AISLE WIDTH REQUIRED FOR RIGHT ANGLE STACKING					
RAS20/25					
Load Width (in.)	Load Length (in.)				
	36	40	42	44	48
30	64	70	72	74	78
36	63	69	71	74	78
40	62	68	71	73	78
42	61	68	71	73	78
44	60	67	70	73	78
48	59	67	71	72	77

Aisle width requirements based on 4" clearance between pallets.  
Add 6-12" for ease of operation.

DIMENSION CHART		
RAS20/25		
Capacity	lbs.	2000/2500
A Tractor Width	in.	28.0
B Tractor Head Length	in.	33.2
C Wheelbase	in.	47.1
D Grade Clearance	n/a	15
E Underclearance: Tractor	in.	1.6
F Underclearance: Baselegs	in.	1.6
G Turning Radius	in.	54.2
H Battery Floor Height*	in.	10.0
I Battery Compartment Width	in.	7.8
J Battery Compartment Length	in.	27.3
K Overall Length (w/o forks)	in.	58.9
L Baseleg Opening (inside)**	in.	32-51
M Baseleg (outside)	in.	40-59
N Control Handle Height/Lowered	in.	24.2
O Tractor Height at Battery	in.	32.8
P Handle Height Retracted	in.	48.6
Q Top Vertical Braking Arc	deg.	6
R Bottom Braking Arc	deg.	8
S Handle Operating Arc	deg.	73
T Forks	in.	1.5 x 4
U Load Backrest (height)	in.	40
V Fork Adjustment	in.	10 - 31.5
Drive Tire	in.	5 x 10 polyurethane
Load Wheels	in.	3 x 4 polyurethane

\* Battery compartment is not available with rollers; battery must be placed in or removed from compartment using an overhead lift or crane.

\*\* Adjustable.

**RAYMOND**  
Above. And beyond.®

The Raymond Corporation  
P.O. Box 130  
Greene, New York 13778-0130  
Toll free 1 (800) 235-7200  
Fax 1 (607) 656-9005

www.raymondcorp.com