

Sideloader Truck

Models 9300 and 9400:

Specification Sheet



RAYMOND
Above. And beyond.®

Model 9300 and 9400 Trucks:

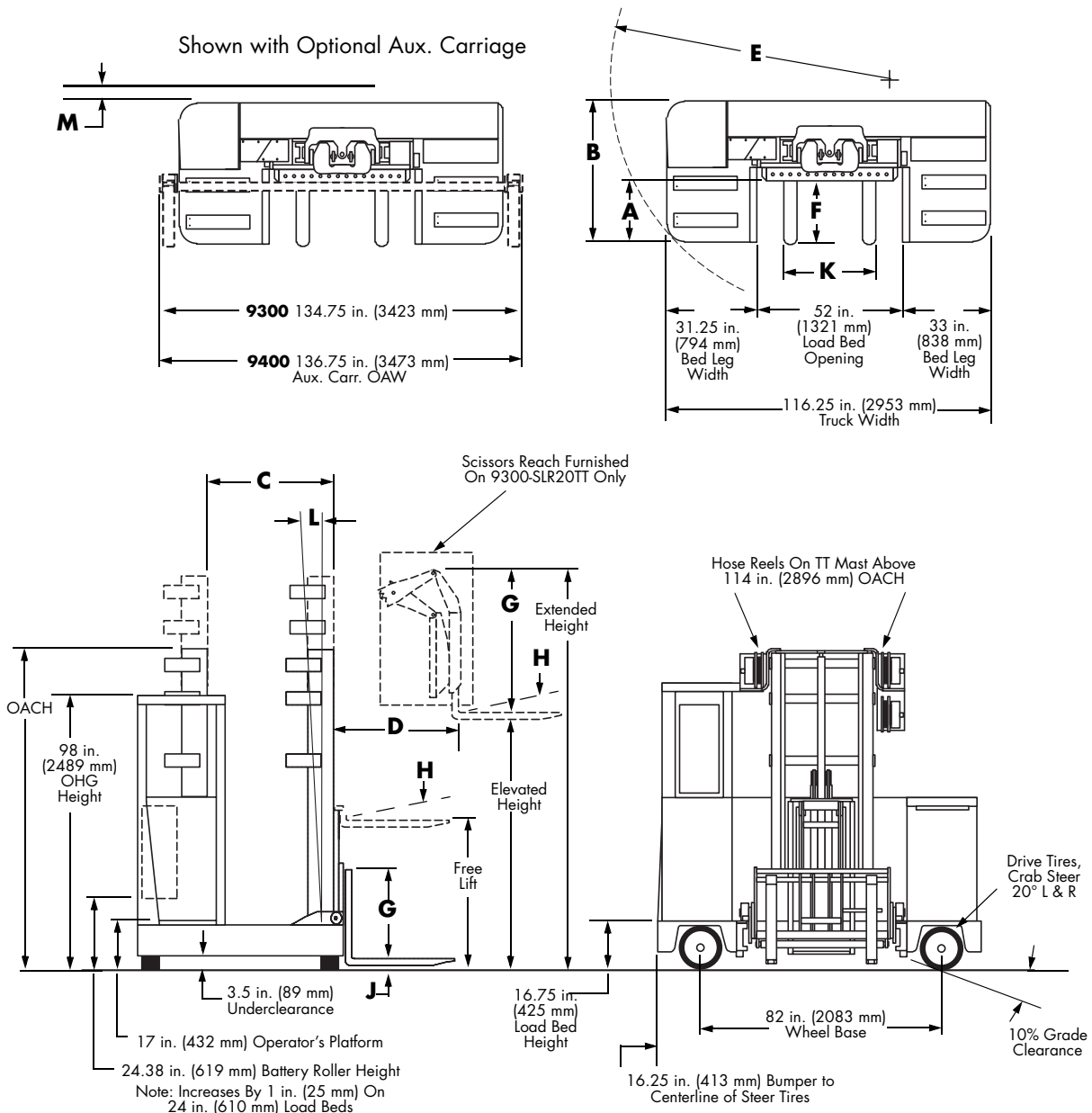
Short Work Of Long Loads

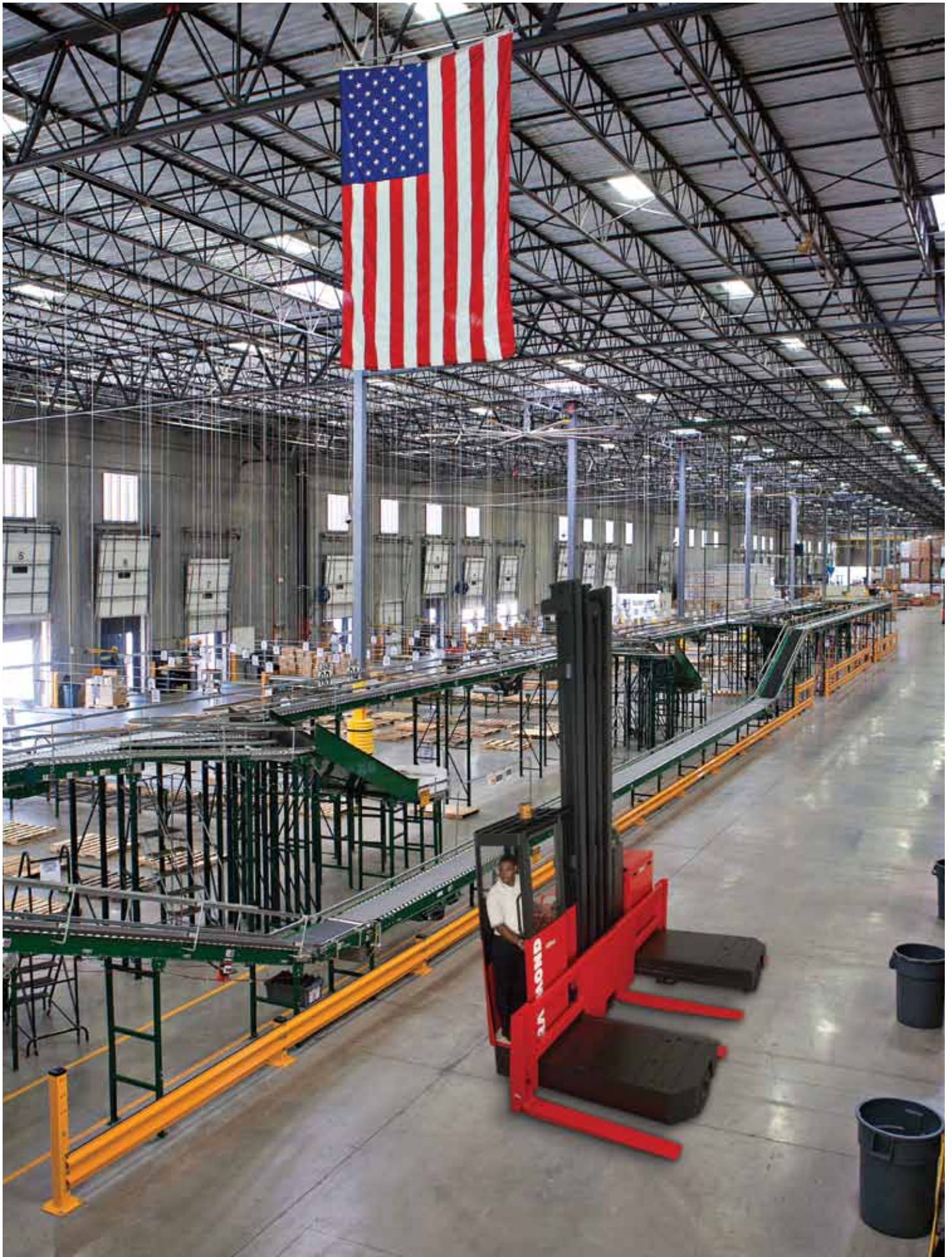
Reliable... Maneuverable... Durable.

The *Raymond*® Sideloader lets you store more in less space by moving long or bulky materials in very narrow aisles and providing high stacking capability. The Model 9300/9400 is reliable, maneuverable and durable. It is also versatile, handling a variety of load types – bar stock, tubing, laminates, or plywood sheets – up to 12,000 lbs. and 26 feet long. The Sideloader is suited to rack storage, feeding machine tools, even order picking.

Key Features & Benefits

- ▶ The *Raymond ACR System™* delivers more uptime, fewer battery changes, lower maintenance costs, and helps you move more product faster.
- ▶ Ergonomic compartment creates a comfortable work environment.
- ▶ Power steering offers superior maneuverability allowing the operator to turn each set of wheels independently.
- ▶ Available in two and three stage mast configurations with collapsed height as low as 97".





MODEL 9300 - DIMENSIONS AND GENERAL INFORMATION

		9300-SLR20TT			9300-SL40TT			9300-SL60TN / 9300-SL60TF				
A Load Bed Length	in. (mm)	36 (914)	42 (1067)	48 (1219)	36 (914)	42 (1067)	48 (1219)	24 (610)	30 (762)	36 (914)	42 (1067)	48 (1219)
B Truck Length	in. (mm)	62.12 (1578)	68.12 (1730)	74.12 (1883)	62.12 (1578)	68.12 (1730)	74.12 (1883)	50.12 (1273)	56.12 (1425)	62.12 (1578)	68.12 (1730)	74.12 (1883)
C Mast Travel	in. (mm)	42 (1067)	48 (1219)	54 (1372)	42 (1067)	48 (1219)	54 (1372)	30 (762)	36 (914)	42 (1067)	48 (1219)	54 (1372)
D Reach Travel	in. (mm)	42 (1067)	48 (1219)	54 (1372)								
E Turning Radius	in. (mm)	120 (3048)	125 (3175)	129 (3277)	120 (3048)	125 (3175)	129 (3277)	120 (3048)	123 (3124)	127 (3226)	130 (3302)	135 (3429)
F Fork, Bar Type Effective Std. Fork Length	in. (mm)	34 (864)	40 (1016)	46 (1168)	36 (914)	42 (1067)	48 (1219)	24 (610)	30 (762)	36 (914)	42 (1067)	48 (1219)
F Forks (Std.) (W x T)	in. (mm)	4 x 1.5 (102 x 38)			4 x 2 (102 x 51)			5 x 2 (127 x 51)				
G Carriage Height	in. (mm)	55 (1397)			31.5 (800)			32 (813)				
H Fork Tilt (Up)	degree	5°			7°			7°				
H Fork Tilt (Down)	degree	2°			0°			0°				
J Fork Lowered Height	in. (mm)	2 (51)			2.5 (64)			2.5 (64)				
K Fork Adjustment	in. (mm)	15-30 (381-762)			15-46 ^[1] (381-1168)			20.5-46.5 (521-1181)				
L Mast Tilt (forward)	degree							0°				
L Mast Tilt (backward)	degree							2°				
M Side Clearance (Rail Guided)	in. (mm)	Contact authorized Raymond Sales and Service Center										
Power Unit		48 Volt, Dual Drive			48 Volt, Dual Drive			48 Volt, Dual Drive				
Max. Capacity Load Center ^[2]	lb. (kg)	2000 (907)			4000 (1814)			6000 (2722)				
Operator's Compartment		Stand-up										
Drive Tires, Poly (2) Dia. x W	in. (mm)	15 x 8 (381 x 203)										
Steer Tires, Poly (2) Dia. x W	in. (mm)	15 x 8 (381 x 203)										
Gradability ^[3]	%	7										
Maximum Elevated Mast Height	in. (mm)	360 (9144)			360 (9144)			290 (7366)				

^[1] 15 in. (381 mm) to 42 in. (1067 mm) for OACH 131.75 (3346 mm) and up. ^[2] Load center is equal to 1/2 of load bed length. ^[3] Not recommended with load.

MAST SPECIFICATIONS 9300

Models	OACH	Elevated Height	Extended Height without Aux. Fork Carriage	Free Lift
	in. (mm)	in. (mm)	in. (mm)	in. (mm)
9300-SLR20TT	131.75 (3346)	300 (7620)	357 (9068)	74.75 (1899)
	153.75 (3905)	360 (9144)	417 (10592)	96.75 (2457)
9300-SL40TT	114.75 (2915)	252 (6401)	278 (7061)	88 (2235)
	131.75 (3346)	300 (7620)	331.5 (8420)	100.25 (2546)
9300-SL60TN	153.75 (3905)	360 (9144)	391.5 (9944)	122.25 (3105)
	99 (2515)	146 (3708)	178 (4521)	11.75 (298)
	124 (3150)	193 (4902)	225 (5715)	11.75 (298)
	149 (3785)	240 (6096)	272 (6909)	11.75 (298)
9300-SL60TF	174 (4420)	290 (7366)	322 (8179)	11.75 (298)
	99 (2515)	146 (3708)	178 (4521)	67 (1702)
	124 (3150)	193 (4902)	225 (5715)	92 (2337)
	149 (3785)	240 (6096)	272 (6909)	117 (2972)
	174 (4420)	290 (7366)	322 (8179)	142 (3607)

PERFORMANCE SPECIFICATIONS 9300

Models - TF, TT		9300-SLR20TT	9300-SL40TT	9300-SL60TN / 9300-SL60TF
Main Controls		Loaded / Unloaded	Loaded / Unloaded	Loaded / Unloaded
Travel Speed	mph (km/h)	5.4 (8.6) / 5.4 (8.6)	5.4 (8.6) / 5.4 (8.6)	5.4 (8.6) / 5.4 (8.6)
Lift Speed	fpm (m/s)	75 (0.38) / 90 (0.46)	50 (0.25) / 80 (0.41)	55 (0.28) / 65 (0.37)
Lower Speed	fpm (m/s)	100 (0.51) / 80 (0.41)	90 (0.46) / 45 (0.23)	60 (0.30) / 60 (0.30)

BATTERY SPECIFICATIONS 9300

Models		9300-SLR20TT	9300-SL40TT	9300-SL60TN / 9300-SL60TF
Ampere-hour (Min/Max)		600 / 775	600 / 775	600 / 775
Max Battery Size-Standard Lead-Acid Battery (L x W x H) - 2		in. 38.5 x 9.25 x 31.25	38.5 x 9.25 x 31.25	38.5 x 9.25 x 31.25
Battery	Max. Weight Combined	lb. 3,300	3,300	3,300
	Min. Weight Combined	lb. 2,300	2,300	2,000-2,500

MODEL 9400 - DIMENSIONS AND GENERAL INFORMATION

		9400-SL60TT		9400-SL100TN / 9400-SL120TF				9400-SL120TT		
A Load Bed Length	in. (mm)	42 (1067)	48 (1219)	24 (610)	30 (762)	36 (914)	42 (1067)	48 (1219)	42 (1067)	48 (1219)
B Truck Length	in. (mm)	72 (1829)	78 (1981)	54 (1372)	60 (1524)	66 (1676)	72 (1829)	78 (1981)	76 (1930)	82 (2083)
C Mast Travel	in. (mm)	46.5 (1181)	52.5 (1334)	27 (686)	33 (838)	39 (991)	45 (1143)	52.5 (1334)	45 (1143)	52.5 (1334)
E Turning Radius	in. (mm)	127 (3226)	132 (3353)	122 (3099)	126 (3200)	129 (3277)	134 (3404)	138 (3505)	137 (3480)	141 (3581)
F Fork, Bar Type Effective Std. Fork Length	in. (mm)	40 (1016)	46 (1168)	24 (610)	30 (762)	36 (914)	42 (1067)	48 (1219)	42 (1067)	48 (1219)
F Forks (Std.) (W x T)	in. (mm)	5 x 2 (127 x 51)		6 x 2.5 (152 x 64)				6 x 2.5 (152 x 64)		
G Carriage Height ^[2]	in. (mm)	37 (940)		36.5 (927)				36.5 (927)		
H Fork Tilt (Up)	°			7°						
H Fork Tilt (Down)	°			0°						
J Fork Lowered Height	in. (mm)	2.5 (64)		2.75 (70)				2.75 (70)		
K Fork Adjustment	in. (mm)	20.5 – 46.5 (521 – 1181)		15-46 (381-1168)				20.5-46.5 (521-1181)		
L Mast Tilt (forward)	°			0°						
L Mast Tilt (backward)	°			2°						
M Side Clearance (Rail Guided)	in. (mm)	Contact authorized Raymond Sales and Service Center								
Power Unit		48 Volt, Dual Drive								
Max. Capacity Load Center	lb. (kg)	6000 (2722)		9400-SL100TN 10,000 (4536)		9400-SL120TF 12,000 (5443)			12,000 (5443)	
Operator's Compartment		Stand-up								
Drive Tires, Poly (2) Dia. x W	in. (mm)	15 x 8 (381 x 203)								
Steer Tires, Poly (2) Dia. x W	in. (mm)	15 x 8 (381 x 203)								
Gradability ^[3]	%	5								
Maximum Elevated Mast Height	in. (mm)	367 (9329)		288 (7315)				359 (9119)		

^[2] This dimension includes an auxiliary carriage. If no auxiliary carriage, deduct 1 in. (25.4 mm) for model SL60TT, deduct 5 in. (127 mm) for models SL100TN, SL120TT and SL120TF.

^[3] Not recommended with load.

MAST SPECIFICATIONS 9400

Models	OACH	Elevated Height	Extended Height without Aux. Fork Carriage	Free Lift
	in. (mm)	in. (mm)	in. (mm)	in. (mm)
9400-SL60TT	97 (2464)	190 (4826)	218.5 (5550)	66 (1676)
	115 (2921)	241 (6121)	269.5 (6845)	84 (2134)
	122 (3099)	265 (6731)	293.5 (7455)	91 (2311)
	157 (3988)	367 (9322)	395.5 (10046)	120 (3048)
9400-SL100TN	97 (2464)	137 (3480)	173.5 (4407)	13.75 (349)
	122 (3099)	184 (4674)	220.5 (5601)	13.75 (349)
	150 (3810)	240 (6096)	276.5 (7023)	13.75 (349)
	176 (4470)	288 (7315)	324.5 (8242)	13.75 (349)
9400-SL120TF	97 (2464)	137 (3480)	173.5 (4407)	60.5 (1537)
	122 (3099)	184 (4674)	220.5 (5601)	85.5 (2172)
	150 (3810)	240 (6096)	276.5 (7023)	113.5 (2883)
9400-SL120TT	176 (4470)	288 (7315)	324.5 (8242)	139.5 (3543)
	157 (3988)	359 (9119)	395.5 (10046)	120.5 (3061)

PERFORMANCE SPECIFICATIONS 9400

Models - TF, TT		9400-SL60TT	9400-SL100TN / 9400-SL120TF	9400-SL120TT
Main Controls		Loaded / Unloaded	Loaded / Unloaded	Loaded / Unloaded
Travel Speed	mph (km/h)	5.4 (8.7) / 5.4 (8.7)	5.4 (8.7) / 5.4 (8.7)	5.4 (8.7) / 5.4 (8.7)
Lift Speed	fpm (m/s)	TBD	38 (0.19) / 50 (0.25)	TBD
Lower Speed	fpm (m/s)	TBD	60 (0.30) / 60 (0.30)	TBD

BATTERY SPECIFICATIONS 9400

Models		9400-SL60TT	9400-SL100TN / 9400-SL120TF	9400-SL120TT
Ampere-hour (Min/Max)		840 / 1085	840 / 1085	840 / 1085
Max Battery Size-Standard Lead-Acid Battery (L x W x H) - 2		in. 38.5 x 12.75 x 31.25	38.5 x 12.75 x 31.25	38.5 x 12.75 x 31.25
Battery	Max. Weight Combined	lb. 4,000	4,000	4,000
	Min. Weight Combined	lb. 3,100-3,200	3,100-3,500	3,100-3,500

Technical Overview

Standard equipment: Get more... do more.

- › 48-Volt power unit
- › The *ACR System*
- › AC-traction and lift system
- › Battery gate, adjustable
- › Battery discharge indicator with lift interrupt, hour meter and indicator light
- › Dual drive
- › Fault and status message
- › Fork tilt
- › Forks, bar type (two forks)
- › Key switch
- › Lift decel prior to maximum elevation
- › Low step height
- › Mast tilt
- › Mast travel
- › Operator's display
- › OSHA and ANSI/ITSDF compliance
- › Owner and Operator Manuals
- › Parking brake, automatic engaging
- › Precise speed control
- › Precise torque control
- › Proportional plugging
- › Programmable travel speed setting
- › Raymond red with black mast
- › Regenerative braking
- › Service braking
- › Single axis control handle for lift and lower
- › Stall protection
- › Start-up and run diagnostics
- › Steering, crab
- › Steering, DC motor
- › Steering, power
- › Storage tote
- › Switch, EPO
- › Thermal limiting, multi-step

Optional Features: Get the Most From Your Truck—Configure it to Your Operating Environment*

- › Auxiliary fork carriage
- › Hydraulic adjustable forks
- › Lift limit switch
- › Load weight indication
- › Optional bed length (from 51" to 60")
- › Rail guidance
- › Travel alarm
- › Travel light
- › Warning light
- › Work lights

* For additional information on these special features see the Features Brochure for Sideloaders Pub# 1081376C and contact your authorized Raymond Sales and Service Center regarding these and other available special features.

RAYMOND
Above. And beyond.®

The Raymond Corporation
P.O. Box 130
Greene, NY 13778-0130
Toll free 1 (800) 235-7200
Fax 1 (607) 656-9005
www.raymondcorp.com

Due to continuous product improvements, specifications are subject to change without notice. *Above. And beyond.*, *ACR System*, and *Raymond* are U.S. trademarks of The Raymond Corporation.

©2011 The Raymond Corporation, Greene, NY.

Printed in USA.

SIFB-1005 0411JCP-2.5

