

Order picking truck 1.0 ton



BT optio

M-series

OME100MW

OME100W



Order picking truck

| Truck specifications | | | | | OME100MW | OME100W |
|----------------------|---|--|--------------------------------|----------------|------------------|---------------------|
| Identification | 1.1 | Manufacturer | | | BT | BT |
| | 1.2 | Model | | | OME100MW | OME100W |
| | 1.3 | Drive | | | Electric | Electric |
| | 1.4 | Operator type | | | Stand on | Stand on |
| | 1.5 | Load capacity/rated load | Q | kg | 850/1000 | 850/1000 |
| | 1.6 | Load centre | c | mm | 600/500 | 600/500 |
| | 1.8 | Load distance, centre of load axle to fork | x | mm | 225 | 225 |
| | 1.9 | Wheelbase | y | mm | 1441 | 1441 |
| Weight | 2.1 | Service weight with battery | | kg | 1995 | 1735 |
| | 2.2 | Axle load, with load, drive/fork wheel | | kg | 697/1228 | 609/1135 |
| | 2.3 | Axle load, without load, drive/fork wheel | | kg | 1176/490 | 1058/410 |
| Wheels | 3.1 | Drive/fork wheel | | | Vulkollan | Vulkollan |
| | 3.2 | Wheel size, front | | mm | Ø 230 x 85 | Ø 230 x 85 |
| | 3.3 | Wheel size, rear | | mm | Ø 250 x 75 | Ø 250 x 75 |
| | 3.5 | Wheels, number front/rear (x=driven wheels) | | | 2/1 (*) | 2/1 (*) |
| | 3.6 | Track width, front | b ₁₀ | mm | 850 | 850 |
| | Dimensions | 4.2 | Height, mast lowered | h ₁ | mm | 2650 |
| 4.4 | | Lift | h ₃ | mm | 3900 | 1450 |
| | | Lift height | h ₂₃ | mm | 3980 | 1530 |
| 4.5 | | Height, mast extended | h ₄ | mm | 6350 | 2940 |
| 4.7 | | Height of overhead guard (cab) | h ₆ | mm | 2390 | — |
| 4.8 | | Stand height | h ₇ | mm | 300 | 300 |
| 4.11 | | Initial lift movement | h ₉ | mm | — | — |
| 4.14 | | Stand height, elevated | h ₁₂ | mm | 4200 | 1750 |
| 4.14.1 | | Picking height (h ₁₂ + 1600 mm) | h ₂₈ | mm | 5800 | 3350 |
| 4.19 | | Overall length | l ₁ | mm | 2770/2970/3170 | 2770/2970/3170 |
| 4.20 | | Length to face of forks | l ₂ | mm | 1870 | 1870 |
| 4.21 | | Overall width ¹⁾ | b ₁ /b ₂ | mm | 970/1000 | 970/970 |
| 4.22 | | Fork dimensions | s/e/l | mm | 62/115/850 | 62/115/850 |
| 4.25 | | Width over forks | b ₅ | mm | 560/685/776 | 560/685/776 |
| 4.32 | | Ground clearance, centre of wheelbase | m ₂ | mm | 60 ²⁾ | 60 ²⁾ |
| 4.33 | | Aisle width for pallets 1000 x 1200 crossways | A _{st} | mm | 1710 | 1610 |
| 4.34 | | Aisle width for pallets 800 x 1200 lengthways | A _{st} | mm | 1310 | 1210 |
| 4.35 | Turning radius | W _a | mm | 1660 | 1660 | |
| 4.41 | Transfer aisle width, 800 x 1200 lengthways | Au | mm | 3270 | 3270 | |
| 4.44 | Clear width driver compartment entrance | l ₂₄ | mm | 425 | 425 | |
| Performance data | 5.1 | Travel speed, with/without load | | km/h | 9,0/9,0 | 9,0/9,0 |
| | 5.2 | Lift speed, with/without load | | m/s | 0,20/0,25 | 0,20/0,25 |
| | 5.3 | Lowering speed, with/without load | | m/s | 0,40/0,37 | 0,40/0,37 |
| | 5.9 | Acceleration time (0-10 meters), with/without load | | s | 6,9/5,9 | 6,9/5,9 |
| | 5.10 | Service brake | | | Electric | Electric |
| Electric motor | 6.1 | Drive motor rating S2 60 min | | kW | 1,8 | 1,8 |
| | 6.2 | Lift motor rating S3 20% | | kW | 5,0 | 5,0 |
| | 6.4 | Battery voltage, nominal capacity K _s | | V/Ah | 24/500 | 24/500 |
| | 6.5 | Battery weight | | kg | 375 | 375 |
| | 6.6 | Energy consumption acc to VDI cycle ³⁾ | | kWh/h | | |
| | Other | 8.1 | Type of drive control | | | Transistor stepless |
| 8.4 | | Sound level at the driver's ear according to EN 12 053 | | dB(A) | | |
| 8.6 | | Steering | | | Electric | Electric |

1) b₁=chassis width, b₂=cab width

2) 25 mm if wire guided.

3) Contact your supplier for information.

All data are based on table configuration. Other configurations may give other values.

Truck performance and dimensions are nominal and subject to tolerances.

BT products and specifications are subject to change without notice.

Mast dimensions

BT optio

| Mast | | | | OME100MW | | | | | OME100W |
|----------------------|-----------------------|----------|------|----------|------|------|------|------|---------|
| Platform height | h_{12} | mm | 2000 | 2950 | 3600 | 4200 | 4700 | 1750 | |
| OME100MW, OME100W | Height, mast lowered | h_1 | mm | 2400 | 2400 | 2400 | 2650 | 2900 | 1460 |
| | Lift movement | h_3 | mm | 1700 | 2650 | 3300 | 3900 | 4400 | 1450 |
| | Height, mast extended | h_4 | mm | 4150 | 5080 | 5760 | 6350 | 6850 | 2940 |
| | Picking height | h_{28} | mm | 3600 | 4550 | 5200 | 5800 | 6300 | 3350 |
| | Total lift height | h_{23} | mm | 1780 | 2730 | 3380 | 3980 | 4480 | 1530 |

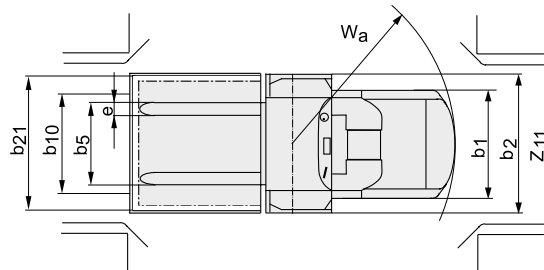
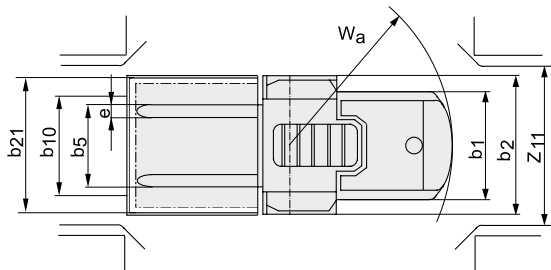
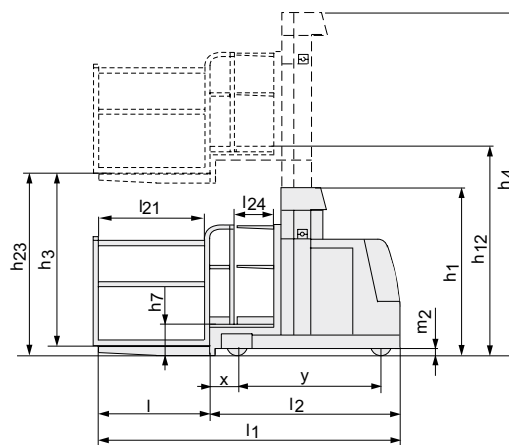
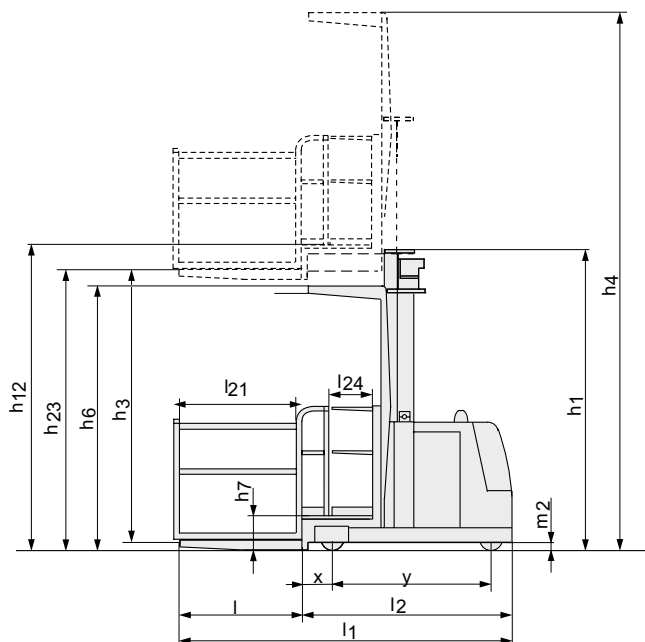
Working aisle widths

| Standard values | Rail guided trucks | | | | Wire guided trucks | | | | | |
|------------------------------------|--------------------|----|-------------|-----------|--------------------|-------------|-------------|------------|-------------|-------------|
| | EUR pallet | | CHEP pallet | | EUR pallet | | CHEP pallet | | | |
| | LS | SS | LS | SS | LS | SS | LS | SS | | |
| Handling type | | | | | | | | | | |
| Pallet length | | mm | 800 | 1200 | 1000 | 1200 | 800 | 1200 | 1000 | 1200 |
| Pallet width | | mm | 1200 | 800 | 1200 | 1000 | 1200 | 800 | 1200 | 1000 |
| Load frame inner dim, (b21 x l 21) | | mm | 1290x820 | 890x1220 | 1290 x 1020 | 1090 x 1220 | 1290 x 820 | 890 x 1220 | 1290 x 1020 | 1090 x 1220 |
| Load frame outer dim, (b22 x l 22) | | mm | 1410 x 900 | 1010x1300 | 1410x1100 | 1210x1300 | 1410x900 | 1010x1300 | 1410x1100 | 1210x1300 |
| Chassis width | b_1 | mm | 970 | 970 | 970 | 970 | 970 | 970 | 970 | 970 |
| Distance between pallets in aisle | Ast | mm | 1710 | 1310 | 1710 | 1510 | 1710 | 1310 | 1710 | 1510 |
| Transfer aisle, VDI Theoretical | Ast_3 | mm | 2990 | 3270 | 3165 | 3300 | 2990 | 3270 | 3165 | 3300 |
| Transfer aisle, Practical | Ast_3 | mm | 3490 | 3770 | 3665 | 3800 | 3990 | 4270 | 4165 | 4300 |

LS = Long side pallet handling
 SS = Short side pallet handling

OME100MW

OME100W



Truck features:

- BT Optipace system
- Clear-view mast
- Driver detection system
- Elevating platform
- Height adjustable control panel with intuitive controls.
- Information display showing all vital information
- Programmable performance
- Wire/rail guidance
- Electronic braking system
- Adjustable backrest
- Storage compartments

